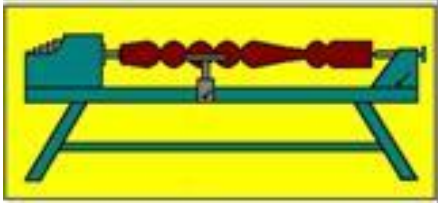


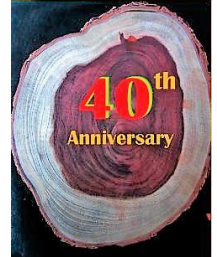
Turning Talk

Volume 33 Number 5

June 2019



Presidential Words *For June 2019*



Dear Members,

Annual Woodturning Competition

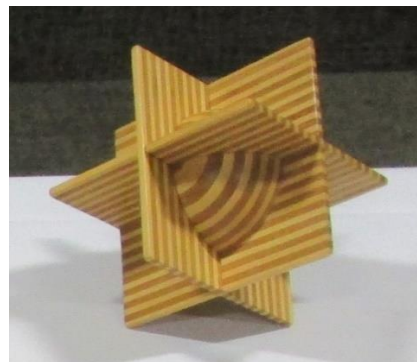
The entry form for this year's competition appears later in this Newsletter. The closing date for submission of the completed form is Tuesday 11 June. Members can enter up to three items in each of the 12 categories. The competition pieces must be delivered to WSQ by Tuesday 18 June, ready for judging on Wednesday 19 June. Certificates will be awarded to the winners and runners up on Saturday 22 June (8.30 am for 9.00 am start). Award-winning pieces will be on display during the August Mt Coot-tha Exhibition. All members are encouraged to enter at least one piece in the competition this year.

40th Anniversary Celebrations

The Competition Awards Ceremony on Saturday 22 June will be followed by a celebration of our 40th Anniversary, with guest speakers and a special birthday cake. After a BBQ lunch, Stephen Hughes from Melbourne will give a half-day demonstration.

Stephen Hughes' Demonstration

The monthly demo in June will be presented by Stephen Hughes, a world renowned woodturner and wood artist from Melbourne. Stephen demonstrated at the Bicentenary Celebration of Woodturning Down Under, organised by WSQ in July 1988, and has demonstrated at WSQ on two previous occasions (1991 and 2005). This year, he will attend our anniversary celebrations on Saturday morning 22 June, before demonstrating for 1½ days. Further details of Stephen's demo are presented elsewhere in this newsletter.



Examples of Stephen's Turned Items from Turnfest 2019

Brian Creese
WSQ President

Diary and Looking Ahead at WSQ June 2019 and Beyond

Date	Day of Month	Session Title	Convenors	Times
1 June	1 st Saturday	WSQ Demonstration	See below Not this month due to the Stephen Hughes demonstration on June 22 and 23	9.00am – Noon
4 June	1 st Tuesday	Open Workshop New Member Training Pyrography Group Evening Open Workshop	John Sheppard & Bob McGeechan Rosie Thornton	8.00am – Noon 1.00pm – 3.30pm 1.00pm – 4.00pm 6.00pm – 9.00pm
6 June	1 st Thursday	WSQ Safety & Workshop Induction for New Members		9.00am – 12noon
7 June	1 st Friday	Toy and Open Workshop Toy Group Open Workshop	Peter Churchward	8.00am – 3.00pm
8 June	2 nd Saturday	Management Committee Meeting		9.00am – Noon
11 June	2 nd Tuesday	Open Workshop New Member Training Evening Open Workshop	Lyndon Prescott	8.00am – Noon 1.00pm – 3.30pm 6.00pm – 9.00pm
13 June	2 nd Thursday	Pre-Booked Project Tuition Cost - \$25.00	Rob McKee	9.00am – 12.30pm
15 June	3 rd Saturday	Woodturning Discussion Forum/ Show and Tell/ Morning Tea for New Members	John Carney	9.00am – Noon
17 June	3 rd Monday	Pyrography Group	Rosie Thornton	9.00am – Noon
18 June	3 rd Tuesday	Open Workshop New Member Training Evening Open Workshop	John Sheppard & Bob McGeechan Rob McKee (Former DVA Team members welcome) John Sheppard	8.00am – Noon 1.00pm – 3.30pm 6.00pm – 9.00pm
25 June	4 th Tuesday	Open Workshop New Member Training Evening Open Workshop	Rob McKee Rob McKee (Former DVA Team members welcome) Allan Dickson	8.00am – Noon 1.00pm – 3.30pm 6.00pm – 9.00pm
27 June	4 th Thursday	Pre-Booked Project Tuition Cost - \$25.00	Rob McKee	9.00am – 12.30pm
Future Events and Important Dates				
Tuesday 11 June		Closing date for Competition entry forms		
Friday 14 to Sunday 16 June		Q-Turn - Hosted by the Ipswich Woodcrafts Club - Held at Boonah - Cost - \$220 per person - Details at https://ipswichwoodcraftsclub.com/q-turn-2019/		
Saturday 15 June		Management Committee Meeting - 9am to 12:30		
Tuesday 18 June		Last day for the delivery of Competition pieces		
Wednesday 19 June		Competition judging day		
Saturday 22 June		40th Anniversary celebrations & Competition Awards Ceremony - 9am to noon - .. Entry is FREE		
Saturday 22 June		Demonstration by Stephen Hughes - 1pm to 4pm - Topic to be advised - Cost: \$25 or \$50 if attending both demonstration sessions		
Sunday 23 June		Demonstration by Stephen Hughes - 9am to 4pm - Topic to be advised - Cost: \$35 or \$50 if attending both demonstration sessions		

The May Design Forum

The Monthly Design forum was held on Saturday May 16.

Although there were only three members in attendance there were quite a few and a variety of items put on the table to stimulate the discussion.

A wooden avocado began the discussion. It was agreed that the actual turning techniques only required basic skills and tools. Peter Wyer carefully explained the step by step method he thoroughly thinks out before beginning the lathe work. His advice is that if you can work through the steps methodically, keeping in mind that you can't come back if you miss a step or do it out of order. This was good advice for any project, and I would suggest a good practice as you develop into the more technically demanding areas of turning.

The shaping of the avocado is done between centres using 2 same size blanks screwed together (no glue) turned to shape leaving the ends still attached. The blank is disassembled and is mounted on a waste disc utilising the same screw holes that joined the two pieces together. A little bit of maths is applied and a circle drawn in the larger end of the avocado half. This is hollowed as you would a bowl. Repeat on the other half of the blank. Turn a nut or seed to fit the hollow. Peter used a

darker timber for this and hollowed the nut to make a lidded vessel.

The discussion went back and forth as most of the items were looked at. We each had input as to how a different approach may have overcome some problems that occurred. We sought each other's opinions on the final shaping and shared thoughts about how to look at turnings from different angles on the lathe. If you are confident take the piece off the lathe and lay it in what will be its normal finished position.

The morning also touched on methods of finish used by each of us. We found that we all used a method we had found user friendly and gave the finish we liked.

At the end of the session we agreed that it had been an informative morning in many ways for each of us. The writer came home and used some thoughts that were expressed in the discussion and finished a lid for a small bowl. It was not the way I had initially planned the lid but I am very happy with the finished article. I had some tear out caused by pest damage and I overcame that with a couple of points raised in the forum.

John Carney

Management Committee Member

Jest a Moment

The Pope met with his Cardinals to discuss a proposal from Benjamin Netanyahu, the leader of Israel.

"Your Holiness", said one of his Cardinals, "Mr. Netanyahu wants to challenge you to a game of golf to show the friendship and ecumenical spirit shared by the Jewish and Catholic faiths."

The Pope thought this was a good idea, but he had never held a golf club in his hand. "Don't we have a Cardinal to represent me?" he asked.

"None that plays very well," a Cardinal replied. "But there's a man named Jack Nicklaus, an American golfer who is a devout Catholic. We can offer to make him a Cardinal. Then ask him to play Mr. Netanyahu as your personal representative. In addition, to showing our spirit of cooperation, we'll also win the match. Everyone agreed it was a good idea and the call was made.

Of course, Nicklaus was honoured and agreed to play. The day after the match, Nicklaus reported to the Vatican to inform the Pope of the result. "I have some good news and some bad news, your Holiness," said Nicklaus.

"Tell me the good news first, Cardinal Nicklaus," said the Pope.

"Well, your Holiness, I don't like to brag, but even though I've played some pretty terrific rounds of golf in my life, this was the best I have ever played, by far. I must have been inspired from above. My drives were long and true, my irons were accurate and purposeful, and my putting was perfect. With all due respect, my play was truly miraculous."

"There's bad news?" asked the Pope.

"Yes, I lost by three strokes to Rabbi Tiger Woods."

Anonymous

WSQ Member

LAGUNA REVO 12|16



DON'T SACRIFICE POWER AND CONTROL FOR THIS CONVENIENT AND COMPACT MIDI-LATHE

The 1216 controls the 1hp DC motor using pulse width modulation. A big problem with DC motor control is torque in the low speeds, will find many MIDI lathes with the lowest speed of 250RPM upwards because of this. PWM will deliver full torque across the entire speed range. This allows for tremendous torque in low speeds which is helpful when roughing and precision work. This also allows for outboard turning up to a 16" bowl on a mid-sized lathe.



The Luxury Banjo W/45° Chamfered Edge.
The banjo is the soul of any lathe! REVO 12|16 banjo a soft yet solid feel unlike any other.



With the one step cam-action belt change, tools are not needed to change belts. Simple slide the belts on and off, protecting them with the magnetic sealed door.

For an incredible inside look Search 'Laguna 12|16 Review' on YouTube!

SUPPLIED TO AUSTRALIA FROM GREGORY MACHINERY

CONTACT: 07-3375-5100 or info@gregmach.com

StopLossBags

Recently I changed from finishing my turnings with lacquer to an oil finish. The oil I chose is OSMO Polyx-Oil 3011 Clear Gloss.



Why the change? The oil finish has a more natural look and it feels great to the touch. My son had just finished a fine furniture course and the cabinet he made was finished with OSMO oil. I was impressed with the quality of the finish. Oil also has the advantage of allowing small spot repairs that are undetectable without needing to strip and respray the whole item.

This oil is described as a hard-wax oil. It is made up of natural plant oils and waxes. There are a number of oils of this type on the market including Kunos Oil and Evolution, all claiming to have their roots in Germany.



The drawback of this finish and other timber finishes is the need to limit the air within the container. My tin is 750ml and I have used to only 30mm below the top of the can. As I am currently only turning small items the lid is continually being opened and closed so the air is continually being changed and the oil stirred. This is allowing a new hard skin to form on the surface each time. While most of the film will dissolve and mix in, some around the edges do not. The result is that over time the oil thickens, and the last portion of the container will become unusable. This is not a cheap product, so I want to limit the waste and keep the oil thin, so it is easy to use.



There is no doubt many ways to reduce the contamination of the oil by air. I have chosen to use the StopLossBags. The funnel fits tightly over the neck of the bag so by resting the base of the bag on the bench and supporting the funnel I was able to pour the contents of the oil tin into the bag. My oil container was reasonably small, so it was not a problem. If you are decanting from a larger container it may be advisable to make a simple jig to support the funnel (See DIY on <https://www.stoplossbags.com/>). Once you have decanted your finish simply push the sides of the unfilled area together and screw on the top. StopLossBags are said to be suitable for use for Oil, Water, and Alcohol based



wood finishes.

Charlie Edwards
WSQ Member

[Editor's Note: These bags are no longer available from the WSQ Shop. They are currently available from Timberbits online. Cost is \$28 for a pack of 4. The collapsible funnel shown is currently available from Carbatec for approximately \$9.]

Entertainment Book



The new 2019/20 year starts on June 1, so be quick to obtain yours to achieve maximum benefit and discounts from the Entertainment Book. **Importantly, 20% of all sales goes to WSQ to assist our fundraising.**

The Entertainment Books are available in the WSQ Shop. Alternatively, the digital membership can be obtained at <https://www.entertainmentbook.com.au/orderbooks/2294k96>

If you already have a digital membership and would like to switch your fundraising support to WSQ, please don't

renew by using the renewal email sent to you by the Entertainment Book; instead, log into your account and select "Renew" - this then enables you to nominate Woodturners Society of Queensland as your fundraising beneficiary.

Should you have any queries, please contact John Reed at treasurer.wsq@iinet.net.au or on 0414 661 395.

John Reed
Treasurer



We've been crafting
woodworking tools in
Sheffield, England for
almost 200 years.

Robert Sorby

As one of the world's premier manufacturers of specialist woodworking tools, we are proud to say we still craft every tool right here in Sheffield, England. Our tools are made from the finest raw materials, using traditional methods and with an attention to detail you won't find anywhere else.

Each tool is meticulously processed in stages by our craftspeople. Every single tool is cut, ground, polished, hardness tested, sharpened, assembled

and packed for shipping – ultimately crafted to provide a lifetime of use in your workshop.

With an extensive range of unique, premium tools, backed by our lifetime warranty, you need look no further for the best tools you can buy. It's our attention to detail and customer first approach that puts Robert Sorby at the top of its class. You can rely on our experience – we know tools.

Proudly distributed by:

carbatec
THE HOME OF WOODWORKING

Find us at:
128 Ingleston Road
Wakerley QLD 4154

(07) 3390 5888 | www.carbatec.com.au

WSQ 2019 Competition

Categories

Items in all categories shall be predominantly made from wood, except for Category H.

A Turned Bowl - Large (greater than 200mm maximum diameter). Opening must be greater than 50% of maximum diameter and overall height must be less than maximum diameter.

B Turned Bowl - Small (maximum diameter less than 200mm). Opening must be greater than 50% of maximum diameter and overall height must be less than maximum diameter.

C Turned Platter or Plate. Height must not be more than 15% of the maximum diameter.

D Vase or Hollowed Form. Vase - height must be more than the maximum diameter. Hollowed Form - must have an opening which is less than 20% of the maximum diameter.

E Spindle Turning. Eligible items include: finials, balustrades (an example of), table lamp stand, lamp stand, legs for a table or chair (an example of), bedpost (an example of).

F Lidded Container (Turned). Any size. Lid may be free, threaded or hinged. Hinges and threads of other materials are allowed.

G Laminated or Segmented Forms (Turned). Solid or Lattice Forms.

H Pens & Pencils. Pens or Pencils that are substantially turned from either wood or acrylic material. Pens or pencils may have features made of wood, non-ferrous metals, acrylic or another material that is turned in the process of producing the pen or pencil. The pen or pencil must be capable of producing writing.

I Identical Pairs or Matching Sets (Turned). Examples include pair of goblets, collection of eggs or fruit, set of coasters, pen & pencil sets, salt & pepper grinders/shakers, etc.

J Article Incorporating Other Work or Materials (Turned). Includes additional work to enhance the basic turned article, including carving, pyrography, colouring, routing, piercing, scroll sawing, etc. Articles with Other Materials may incorporate metal, leather, plastic, etc.

K Pyrography. Any item where pyrographic design is the predominant feature. May include pictures on flat surfaces or decorated woodturned items.

L Non-Woodturned Items. Includes toys, models, non-turned boxes and carved items. May also include picture frames, small items of furniture (no dimension to exceed 500 mm), chopping boards, trays, clocks etc. May include woodturning as a minor technique. Items must be substantially made of wood with any mechanical component made of metal, ceramic, etc.

Competition Entry Form (one form per entry please)

Please refer to Competition Rules & Categories above. Entry forms must be returned to Alwyn Clark or Brian Creese by Tuesday 11 June 2019. Completed entry forms can also be e-mailed to brian.creese@bigpond.com.

Name:		Office use only
Category (see list above):		
Timber type(s):	Finish:	
Dimensions: Max diameter (mm):	Height/length (mm):	
Description, including notable features:		

In submitting this Entry Form, I confirm that I have read and agree to the Conditions of Entry, as published in the May edition of Turning Talk.

Member's Signature: Date:

Enquiries to Brian Creese: e-mail brian.creese@bigpond.com, phone 33784041 / 0447108551.

Brian Creese
WSQ President

Why Do I Wear A Face Shield When Turning?

Because you don't know what is inside the piece you are about to turn.

Take this piece of Camphor Laurel, nice looking piece for a bowl with colour variations.

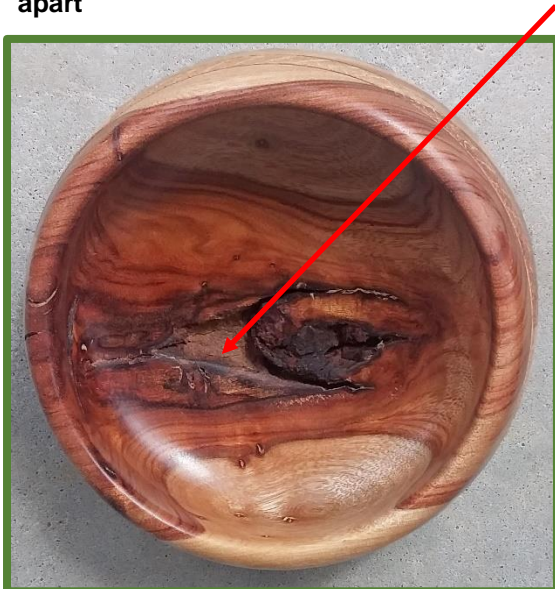
There is what looks like a small worm hole – no matter I'll turn that out.



So, I decided the side with the worm hole would be the top of the bowl and mounted it on the lathe to turn the bottom and cut the socket to grip the piece for turning the inside.

Turning the inside then revealed a cavity in the bottom.

The potential problem is that the deepest part of the cavity aligns with the deepest part of the foot. **I had less than 2mm of timber in that part which, if it gave way, would have caused a major fracture and the piece flying apart**



Please wear a quality face shield when turning!

Allan Short
WSQ Member

Stephen Hughes Demonstration, 22-23 June

The monthly demo in June will be presented by Stephen Hughes, a world renowned woodturners and wood artist from Melbourne. This year, he will attend our anniversary celebrations on Saturday morning 22 June, before demonstrating for 1½ days (Saturday afternoon, 1-4 pm, and all day on Sunday (9 am- 4 pm).

The topics to be covered in the demo will include:

- ❖ Spherical boxes with a difference (Saturday afternoon)
- ❖ Turning fine spindle leg forms and finial details (Sunday)
- ❖ Turning a split segmented lamp and fitting 12V LED lighting (Sunday).



The cost of the demo is \$25 for the Saturday afternoon session, \$35 for the Sunday session, or \$50 if you register for both days. Lunch is included. Please register early for this event by e-mail to brian.creese@bigpond or phone 3397 8156.

Brian Creese
WSQ President

Lathe Maintenance

Did you ever wonder about the elves at the bottom of the garden? What about the things that happen around your club? Did you notice that equipment in the workshop was in pretty good shape a couple of weeks ago? How about the old office? It's nice and bright now.

On Thursday May 16 Reg Weber and a SMALL team of members spent the day doing some maintenance on the lathes and chucks. One member battled on with one hand, whilst another singularly prepared and painted the old office area. We all enjoyed the work and, thanks to Reg who generously shares his knowledge, we know more about how to care for our own lathes.



"Chief Elf" Reg



"Elf" Little Bob



"Elf" Albert

John Carney
Management Committee Member

Demonstration at Bayside Woodturners & Woodcrafters Club

The Bayside woodies club has engaged the services of Pat Johnson to present an all-day seminar. The topics will be a range of advanced, mainly turning techniques, and demonstrations.

Pat is a very experienced turner as well as being a renowned educator and presenter. He has a facebook page called 'The travelling woodturner'

The demo will be held at our clubhouse at 15 Harman St, Manly on Saturday 8 June 2019 from 9:00am to 4:00pm

It is proposed to cover topics to develop and improve woodworking skills, possibly including hollow forms, eccentric work on the faceplate, eccentric sculptured forms, large carved platters/bowls and some creative artistic techniques. A final agenda still to be determined.

The cost for the day is \$20 per head. This will include morning and afternoon teas as well as lunch. We need to restrict numbers to 80. We have elected to invite a number of local clubs to share this experience.

Could you please give me an indication of interest? I would appreciate it if each of the invited clubs could give me a heads up on numbers. I don't wish to juggle hundreds of individual enquiries.

Payment can be made on the day. But, for catering purposes we need to know the number of definite attendees to expect.

Maurie Page
Bayside Secretary and WSQ Member

Membership Matters!

Birthdays:

The following members have fessed up to having birthdays in May or June:

- Loretta Scaini-Clarke
- Scotty Taylor
- Philip Oostenbroek
- Tai Nguyen
- John McCrae
- Josh Woodham

Wishing these members and those who have birthdays in May and June a Happy Birthday.

New Members
No new members in May:

New members, when signing in please look on the small white board next to the cash tin for your name badges.

Alwyn Clark
Membership Secretary

Council Library Displays

	Northside Team	Southside Team
June	Nundah	Mt Ommaney
July	N/A	Holland Park

John Byrne
WSQ Member

Toni Dowd
Assistant Librarian

The views expressed in this publication are not necessarily those of the Woodturners Society of Queensland or its Management Committee.

Other organisations are welcome to use, with appropriate acknowledgement, editorial material from this publication.

You're invited to contribute to the content of TT.

To do so, preferably by Email:

gholbeck@hotmail.com

Or, by mail:

C/O TT EDITOR @ WSQ
19 Pine Street, Greenslopes
Brisbane, Qld 4120

All contributions for the July 2019 edition of Turning Talk need to be submitted by no later than Thursday 27 June 2019.

Tree of the Month

Jacaranda



Jacaranda Tree in Flower

Botanical name: *Jacaranda mimosifolia*
Other common name: Palisanderbaum - Germany
Family name: Bignoniaceae.

Distribution: Originally from Brazil. Now widely grown as an ornamental throughout the world. A large hardwood that is famous for its purple flowers. In Australia the tree is best seen in Grafton. There are over 40 species within the Jacaranda group. *J. cuspidifolia* and *J. acutifolia* are very similar in appearance.

Colour: The heartwood is whitish with the growth rings giving a silver sheen to the timber. The sapwood is similar in colour but distinct.

The timber: Straight to slightly interlocked grain. Texture is very fine and even.

Mechanical properties: Jacaranda has not been tested. The kiln dried density appears to be about 650kgs/m³ (43lbs/ft³). It is non-durable.

Working Properties: Jacaranda works easily. Sharp tools are required to minimise lifting of the grain. Pre-bore for fixings. Its glues well but attempts at staining can lead to blotchiness. It comes to a fine, smooth finish.

Uses: Woodware, furniture, carving and turnery.

Availability: From reclaimed garden specimens. A timber worthwhile looking for.



Jacaranda Timber



Jacaranda Bowl by Dan Woodward



Jacaranda Boxes by Allan Short

Geoff Holbeck
Editor – Turning Talk

The text, tree and timber images were sourced from "Timber in Australia in Colour" by David C Clark. The turned image was provided by WSQ.

Turning Talk

Published by the
Woodturners Society of Queensland Incorporated

Management Committee

President: Brian Creese 3378 4041
Vice President: Bob Kennedy 3892 4675
Secretary: Rosie Thornton 0456 073 790
Treasurer: John Reed 3263 1861
Members: Alwyn Clark 3803 4270
Bob McGeechan 3394 1839
Geoff Holbeck 3901 6782
John Carney 3245 6135
John Donaldson 0407 022 403
Paul Tierney 3288 3509
Reg Weber 3206 2325

Other Positions

Emeritus Vice President: Kev Kruger
Newsletter Editor: Geoff Holbeck 3901 6782
Membership Secretary: Alwyn Clark 3803 4270
Librarian: Alwyn Clark 3803 4270
Assistant Librarian: Toni Dowd 3175 0383
Storekeeper: Don McMillan 3814 4820
Training Manager: Rob McKee 3207 1785
Asst. Training Manager: Wayne Molloy 3273 2659
Mt Coot-tha Co-ordinator: Rob McKee 3207 1785
Competition Organiser: Vacant
Web Co-ordinator: Gary Bidgood 0407 144 763
Welfare Officer: Ron Marlow 3355 5995
Caretaker: Len Young 3397 8827

WOODWORK
MACHINERY... PLUS

Unit 8 / 43 Station Avenue Darra Ph 3705 8558



Your newest woodworking shop in town, stocking RIKON, RECORD POWER and WOODFAST, is offering all WSQ Members

15% off Hamlet individual tools & Sets
For the month of May ONLY



For more information please visit:
www.woodworkmachinery.com.au



VICMARC®
MACHINERY PTY LTD

PROUDLY AUSTRALIAN MADE AND OWNED
SINCE 1984



GRINDING
REST &
SHARPENING
JIG



VICMARC
SLOW SPEED
GRINDER



QUALITY
LATHES



CHUCKS



HUGE
VAREITY
OF CHUCK
JAWS

AUSTRALIAN MANUFACTURERS OF QUALITY WOODTURNING LATHES, CHUCKS AND ACCESSORIES

For more information and to see our full range of products visit our website

www.vicmarc.com

Email: vicmarc@vicmarc.com Ph: (07) 3284 3103 Fax: (07) 3283 4656