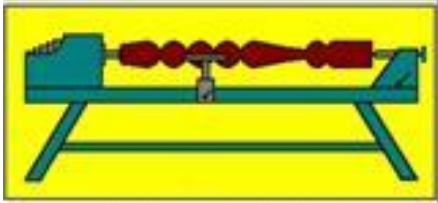


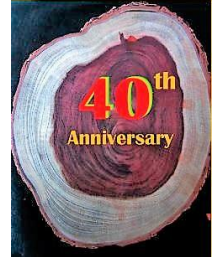
# Turning Talk

Volume 33 Number 4

May 2019



## Presidential Words *For May 2019*



**Dear Members,**

### **Demonstrations**

The monthly demo in April followed a new format, with one of WSQ's top woodturners, Theo Haralampou, providing hands-on instruction to a small group of members with beginner or intermediate skill levels. The topic was how to make a natural-edged mushroom. The class started with basic spindle turning techniques using camphor laurel blanks. After roughing down and creating a dovetail tenon on one end, Theo took the opportunity to demonstrate the use of the chatter tool on the end of the reversed blank before shaping the top of the mushroom. Unfortunately, time ran out, but Theo generously offered to come back for a second session to finish off the first mushroom and to work on the natural-edged version. All the students commented on how much they enjoyed the two classes, and how valuable they were in terms of acquiring new skills or honing their spindle-turning techniques.



### **Annual Woodturning Competition**

The entry form for this year's competition appears later in this Newsletter. The closing date for submission of the completed form is Tuesday 11 June. Members can enter up to three items in each of the 12 categories. The competition pieces must be delivered to WSQ by Tuesday 18 June, ready for judging on Wednesday 19 June. Certificates will be awarded to the winners and runners up on Saturday 23 June (8.30 am for 9.00 am start). Award-winning pieces will be on display during the August Mt Coot-tha Exhibition. All members are encouraged to enter at least one piece in the competition this year.

### **40<sup>th</sup> Anniversary Celebrations**

The Competition Awards Ceremony on Saturday 22 June will be followed by a celebration of our 40<sup>th</sup> Anniversary, with guest speakers and a special birthday cake. After a BBQ lunch, Stephen Hughes from Melbourne will give a half-day demo, followed by a full day on Sunday 23 June, the actual anniversary date. Details of Stephen's demo are presented elsewhere in this newsletter.

**Brian Creese**  
*WSQ President*

## Diary and Looking Ahead at WSQ May 2019 and Beyond

Date	Day of Month	Session Title	Convenors	Times
2 May	1 <sup>st</sup> Thursday	WSQ Safety & Workshop Induction for New Members		9.00am – 12noon
3 May	1 <sup>st</sup> Friday	Toy and Open Workshop Toy Group Open Workshop	Peter Churchward	8.00am – 3.00pm
4 May	1 <sup>st</sup> Saturday	WSQ Demonstration	See below <b>Not this Month due to long weekend &amp; Maleny Wood Expo.</b>	9.00am – Noon
7 May	1 <sup>st</sup> Tuesday	Open Workshop  New Member Training <b>Pyrography Group</b> Evening Open Workshop	John Sheppard & Bob McGeechan  <b>Rosie Thornton</b>	8.00am – Noon  1.00pm – 3.30pm <b>1.00pm – 4.00pm</b> 6.00pm – 9.00pm
9 May	2 <sup>nd</sup> Thursday	Pre-Booked Project Tuition Cost - \$25.00	Rob McKee	9.00am – 12.30pm
11 May	2 <sup>nd</sup> Saturday	Management Committee Meeting		9.00am – Noon
14 May	2 <sup>nd</sup> Tuesday	Open Workshop New Member Training Evening Open Workshop	Lyndon Prescott	8.00am – Noon 1.00pm – 3.30pm 6.00pm – 9.00pm
18 May	3 <sup>rd</sup> Saturday	Woodturning Discussion Forum/ Show and Tell/ Morning Tea for New Members	John Carney	9.00am – Noon
20 May	3 <sup>rd</sup> Monday	<b>Pyrography Group</b>	<b>Rosie Thornton</b>	<b>9.00am – Noon</b>
21 May	3 <sup>rd</sup> Tuesday	Open Workshop  New Member Training  Evening Open Workshop	John Sheppard & Bob McGeechan Rob McKee (Former DVA Team members welcome) John Sheppard	8.00am – Noon  1.00pm – 3.30pm 6.00pm – 9.00pm
23 May	4 <sup>th</sup> Thursday	Pre-Booked Project Tuition Cost - \$25.00	Rob McKee	9.00am – 12.30pm
28 May	4 <sup>th</sup> Tuesday	Open Workshop New Member Training  Evening Open Workshop	Rob McKee Rob McKee (Former DVA Team members welcome) Allan Dickson	8.00am – Noon 1.00pm – 3.30pm 6.00pm – 9.00pm
N/A	5 <sup>th</sup> Tuesday Only if one falls in the month	Open Workshop New Member Training Evening Open Workshop	Rob McKee Rob McKee Rob McKee	8.00am – Noon 1.00pm – 3.30pm 6.00pm – 9.00pm
<b>Future Events and Important Dates</b>				
<b>Saturday 4 to Monday 6 May</b>		<b>Maleny Wood Expo, Maleny Showgrounds - Cost: \$15, Concessions \$12 - Details: <a href="http://www.malenywoodexpo.com">www.malenywoodexpo.com</a></b>		
<b>Saturday 1 June</b>		<b>Demonstration Topic to be advised - 9am to noon - Cost: \$5</b>		
<b>Tuesday 11 June</b>		<b>Closing date for Competition entry forms</b>		
<b>Friday 14 to Sunday 16 June</b>		<b>Q-Turn - Hosted by the Ipswich Woodcrafts Club - Held at Boonah - Cost - \$220 per person - Details at <a href="https://ipswichwoodcraftsclub.com/q-turn-2019/">https://ipswichwoodcraftsclub.com/q-turn-2019/</a></b>		
<b>Saturday 15 June</b>		<b>Management Committee Meeting - 9am to 12:30</b>		
<b>Tuesday 18 June</b>		<b>Last day for the delivery of Competition pieces</b>		
<b>Wednesday 19 June</b>		<b>Competition judging day</b>		
<b>Saturday 22 June</b>		<b>40<sup>th</sup> Anniversary celebrations &amp; Competition Awards Ceremony - 9am to noon - .. Entry is FREE</b>		
<b>Saturday 22 June</b>		<b>Demonstration by Stephen Hughes - 1pm to 4pm - Topic to be advised - Cost: \$25 or \$50 if attending both demonstration sessions</b>		
<b>Sunday 23 June</b>		<b>Demonstration by Stephen Hughes - 9am to 4pm - Topic to be advised - Cost: \$35 or \$50 if attending both demonstration sessions</b>		

## Treasurer's Report

A summary of our financial position for March is:

### Income

Memberships	\$830
Meeting/Workshop Income	\$1,275
Container Refunds	\$251
Hall Rental	\$60
Shop Profit	\$174
Open Days Profit	\$1,244
Sundry Income	\$285
	<u>\$4,119</u>

### Less Expenses

Workshop Expenses	\$542
Insurance	\$332
Library Purchases	\$128
Telephone & Internet	\$114
Cleaning	\$240
Rates	\$138
Electricity	\$805
Other Expenses	\$346
	<u>\$2,645</u>

<b>Net Profit</b>	<b>\$1,474</b>
<b>Cash at Bank</b>	<b>\$37,101</b>

The results for the Open Day Weekend are:

	Sales Commission	Café	Raffle	Other	Total
Income	\$ 280	\$ 376	\$ 496	\$ 212	\$ 1,364
Costs	\$ -	\$ 84	\$ 88	\$ 36	\$ 208
Profit	\$ 280	\$ 292	\$ 408	\$ 176	\$ 1,156

Members' sales totalled \$1,788 (2018 - \$1,770). Other Income comprised Toy sales \$100 (2018 - \$120), WSQ sales (Obsolete books etc) \$55 (2018 - \$53) and Charity Table \$45 (2018 - Nil).

Thank you to everyone who contributed to the weekend.

**John Reed**  
*Treasurer*

## May Woodturning Forum for Discussion, Show and Tell

The May forum is to be directed towards the newer members of WSQ. Members who have joined in 2018 and 2019 are particularly encouraged to attend. The purpose of these forums is for members to assist each other by discussing how they approached producing an article, the difficulties they encountered and how they overcame them. If you are comfortable please bring a piece that you have finished or one you are not sure of the next step. Some input from others may help you to bring the work to a conclusion.

Remember there are many ways to get to your goal, getting there safely is the primary concern. Participation may just involve listening to how fellow members approach various issues. When we learn to do the

basics and gain confidence in our abilities we are encouraged to take our work to the next level. There are many levels of turners in our club and around the world. If you are at the beginning of the journey, group discussion with like-minded people can be very informative. As participants you will have the opportunity to guide the discussion in directions to help yourselves and others with tips from experience gained from your journey thus far.

Saturday May 18<sup>th</sup> 9.00 am – 12 noon cost \$5.00

**John Carney**  
*Management Committee Member*

## Jest a Moment

A couple of elderly men were venting their frustrations about the woes of modern technology.

"I just can't ever seem to remember my darn passwords," grumbled one of them.

The other one smiled. "Oh really? I can never forget mine!"

"How do you manage it?" asked the first guy curiously.

"Well, I simply set all my passwords to 'Incorrect' so that whenever I'm told that my password is incorrect, I'll remember it!"

**Anonymous**  
*WSQ Member*

*(Borrowed from Peter FitzSimons, a journalist and columnist with The Sydney Morning Herald.)*





We've been crafting  
woodworking tools in  
Sheffield, England for  
almost 200 years.

## *Robert Sorby*

As one of the world's premier manufacturers of specialist woodworking tools, we are proud to say we still craft every tool right here in Sheffield, England. Our tools are made from the finest raw materials, using traditional methods and with an attention to detail you won't find anywhere else.

Each tool is meticulously processed in stages by our craftspeople. Every single tool is cut, ground, polished, hardness tested, sharpened, assembled

and packed for shipping – ultimately crafted to provide a lifetime of use in your workshop.

With an extensive range of unique, premium tools, backed by our lifetime warranty, you need look no further for the best tools you can buy. It's our attention to detail and customer first approach that puts Robert Sorby at the top of its class. You can rely on our experience – we know tools.

*Proudly distributed by:*

**carbatec**  
THE HOME OF WOODWORKING

Find us at:  
128 Ingleston Road  
Wakerley QLD 4154

(07) 3390 5888 | [www.carbatec.com.au](http://www.carbatec.com.au)

# WSQ 2019 Competition - Rules & Conditions

1. **Competition Date:** Wednesday 19 June (Judging Day).
2. **Entries:**
  - a. Only financial members of WSQ are eligible to enter the Competition
  - b. Entry forms are to be received no later than Tuesday 11 June.
  - c. Entries will be placed in the Level recorded for each member in the WSQ Membership Database.
  - d. A maximum of three (3) items may be entered in each category.
  - e. Competition pieces are to be delivered to WSQ Hall by 8 pm on Tuesday 18 June.
  - f. Competition pieces must have been completed in the period 12 months prior to the Competition Date.
3. **Levels:**
  - a. Level 1 – Top level (more experienced turners promoted from Level 2).
  - b. Level 2 – Intermediate level with members promoted from Level 3.
  - c. Level 3 – Beginners or inexperienced turners.

Members who believe they should compete at a level other than that shown above as applying to them, should contact the Competition Convenor. Members can check their competition level by contacting the WSQ Membership Secretary.
4. **Judging:**
  - a. Each entry will be judged by two judges, with each of them awarding a maximum of 100 points for each of four judging criteria: Design, Workmanship, Degree of Difficulty and Finish. Maximum points score for each item is 800 points.
  - b. Judges will also be asked to provide comments against each of the judging criteria.
  - c. The judges will be unaware of the entrant's level.
  - d. Judges' comments for each entry and point scores will be provided to competitors.
5. **Awards:**
  - a. Awards will be recognized by the presentation of certificates.
  - b. First place will be awarded in all categories and for all levels for which there are entries.
  - c. Second place will be awarded in all categories and for all levels for which there are at least two entries.
  - d. Highly commended certificates will be awarded to those entries that are within 10% of the score of first prize in the category and level, provided that the percentage total for that item exceeds 70% for Level 3, 75% for Level 2, or 80% for Level 1.
6. **Promotion:**
  - a. Advancement from one level to the next requires two first prizes in different categories at the current level, subject to the conditions in paragraph **b** below. This may be in the current competition or over the current competition and the WSQ competitions over the previous three (3) years.
  - b. For first place prizes to be considered for promotion the percentage total for the item must exceed 70% for promotion to Level 2 or 75% for promotion to Level 1.
7. **Conditions of Entry:**

The Society reserves the right to photograph any or all of the competition entries for the purpose of preserving a record, to publish in any media publication, to exhibit on the Society's internet web page and/or make prints available for sale with management approval. The final decisions on any matters relating to the Competition rest with the Competition Convenor.

## Categories

**Items in all categories shall be predominantly made from wood, except for Category H.**

**A Turned Bowl** - Large (greater than 200mm maximum diameter). Opening must be greater than 50% of maximum diameter and overall height must be less than maximum diameter.

**B Turned Bowl** - Small (maximum diameter less than 200mm). Opening must be greater than 50% of maximum diameter and overall height must be less than maximum diameter.

**C Turned Platter or Plate.** Height must not be more than 15% of the maximum diameter.

**D Vase or Hollowed Form.** Vase - height must be more than the maximum diameter. Hollowed Form - must have an opening which is less than 20% of the maximum diameter.

**E Spindle Turning.** Eligible items include: finials, balustrades (an example of), table lamp stand, lamp stand, legs for a table or chair (an example of), bedpost (an example of).

**F Lidded Container (Turned).** Any size. Lid may be free, threaded or hinged. Hinges and threads of other



materials are allowed.

**G Laminated or Segmented Forms (Turned).** Solid or Lattice Forms.

**H Pens & Pencils.** Pens or Pencils that are substantially turned from either wood or acrylic material. Pens or pencils may have features made of wood, non-ferrous metals, acrylic or another material that is turned in the process of producing the pen or pencil. The pen or pencil must be capable of producing writing.

**I Identical Pairs or Matching Sets (Turned).** Examples include pair of goblets, collection of eggs or fruit, set of coasters, pen & pencil sets, salt & pepper grinders/shakers, etc.

**J Article Incorporating Other Work or Materials (Turned).** Includes additional work to enhance the basic turned article, including carving, pyrography, colouring, routing, piercing, scroll sawing, etc. Articles with Other Materials may incorporate metal, leather, plastic, etc.

**K Pyrography.** Any item where pyrographic design is the predominant feature. May include pictures on flat surfaces or decorated woodturned items.

**L Non-Woodturned Items.** Includes toys, models, non-turned boxes and carved items. May also include picture frames, small items of furniture (no dimension to exceed 500 mm), chopping boards, trays, clocks etc. May include woodturning as a minor technique. Items must be substantially made of wood with any mechanical component made of metal, ceramic, etc.

### Competition Entry Form (one form per entry please)

Please refer to Competition Rules & Categories above. Entry forms must be returned to Alwyn Clark or Brian Creese by Tuesday 11 June 2019. Completed entry forms can also be e-mailed to [brian.creese@bigpond.com](mailto:brian.creese@bigpond.com).

Name:		Office use only
Category (see list above):		
Timber type(s):	Finish:	
Dimensions: Max diameter (mm):	Height/length (mm):	
Description, including notable features:		

In submitting this Entry Form, I confirm that I have read and agree to the Conditions of Entry, as published in the May edition of Turning Talk.

Member's Signature: ..... Date: .....  
 Enquiries to Brian Creese: e-mail [brian.creese@bigpond.com](mailto:brian.creese@bigpond.com), phone 33784041 / 0447108551.

Brian Creese  
 WSQ President

## Dinosaur Egg

### Possibly of the Species *Jacarandosaurus mimosifolia*

While participating on a recent archaeological expedition in the uninhabited wild country of Chelmer, I was fortunate to discover this dinosaur egg in fair condition (some minor decay noted).



After I carefully extracted the egg, it was examined by the chief archaeologist who was pleased to

identify it. It is so far the only evidence of *Jacarandosaurus* in Australia. It was noted for its lilac plumage. Skeletons and eggs of this very large plant eating dinosaur are commonly found in South America. Photos and details have been sent to the World Dinosaur Registry in Antarctica for confirmation.

Peter Loth  
 WSQ member

## LAGUNA REVO 12|16



### DON'T SACRIFICE POWER AND CONTROL FOR THIS CONVENIENT AND COMPACT MIDI-LATHE

The 1216 controls the 1hp DC motor using pulse width modulation. A big problem with DC motor control is torque in the low speeds, will find many MIDI lathes with the lowest speed of 250RPM upwards because of this. PWM will deliver full torque across the entire speed range. This allows for tremendous torque in low speeds which is helpful when roughing and precision work. This also allows for outboard turning up to a 16" bowl on a mid-sized lathe.



The Luxury Banjo W/45° Chamfered Edge. The banjo is the soul of any lathe! REVO 12|16 banjo a soft yet solid feel unlike any other.



With the one step cam-action belt change, tools are not needed to change belts. Simple slide the belts on and off, protecting them with the magnetic sealed door.

For an incredible inside look Search 'Laguna 12|16 Review' on YouTube!

SUPPLIED TO AUSTRALIA FROM GREGORY MACHINERY

CONTACT: 07-3375-5100 or [info@gregmach.com](mailto:info@gregmach.com)

## Stephen Hughes Demonstration, 22-23 June

The monthly demo in June will be presented by Stephen Hughes, a world renowned woodturners and wood artist from Melbourne. Stephen demonstrated at the Bicentenary Celebration of Woodturning Down Under, organised by WSQ in July 1988, and has demonstrated at WSQ on two previous occasions (1991 and 2005). This year, he will attend our anniversary celebrations on Saturday morning 22 June, before demonstrating for 1½ days (Saturday afternoon, 1-4 pm, and all day on Sunday (9 am- 4 pm).

The topics to be covered in the demo will include:

- Spherical boxes with a difference (Saturday afternoon)
- Turning fine spindle leg forms and finial details (Sunday)
- Turning a split segmented lamp and fitting 12V LED lighting (Sunday)



The cost of the demo is \$25 for the Saturday afternoon session, \$35 for the Sunday session, or \$50 if you register for both days. Lunch is included. Please register early for this event by e-mail to [brian.creese@bigpond](mailto:brian.creese@bigpond) or phone 3397 8156.

**Brian Creese**  
WSQ President

## WSQ Library News

Books, DVD'S, Magazine's Missing as at 03-04-2019.

### Books/DVD'S

Legend	Title	Author	Borrower
1.1.48	Plant Identikit (Flinders ranges)	Neville Bonney	Missing
4.2.17	Woodturning A Foundation Course	Keith Rowley	Missing
4.5.25	Carving on Turning	Chris Pye	Missing

### DVD'S

Legend	Title	Author	Borrower
3.2.100	Pyrography Workshop	Sue Walters	Missing
4.4.101	The Practice of Woodturning	D Stubbs	Missing
3.1.101	Sculpting Wood Beyond the Lathe	Trent Bosch	Missing

### Magazines

Legend	Title	Author	Borrower
9.2.10	Woodturning Mag 2001		Missing
9.6.2	The Woodturner-Sunday Collection		Missing

After a stocktake on 3 April 2019, these Items were identified as missing from the Library. They have gone missing without being booked out. Members, could you please check at home to see if you have any of these items

**Alwyn Clark**  
WSQ Librarian



## Container Refund Scheme

WSQ is registered as a Container Collection (Donation) Point. This means that, if you wish, WSQ can receive the refund on containers which you return. This can be done in two ways. Firstly, you can bring your containers to WSQ premises and we will arrange for the refund. Secondly, you can take the containers to your local refund point and nominate WSQ as the recipient of the refund which will be credited to our bank account.

**WSQ's ID for this is C10001309.**

***Are you still placing your empty drink bottles in your recycling bin?*** If so, why not drop them into WSQ Hall and allow us to receive the refund.

Most drink containers (except plain milk, spirit and wine containers) between 150ml and 3 litres are eligible for a 10 cent refund under the scheme. You can check whether a container is eligible by entering its barcode at <https://www.containersforchange.com.au/how-it-works>.

Please consider nominating WSQ as the recipient of your refunds – the more funds we receive from this source, the more funds we'll have to cover operating costs and to improve WSQ's facilities.

**John Reed**  
*Treasurer*

## New Workshop Conveners

After satisfactorily completing a 5-week on-the-job training program, we now have significantly increased our resource of Workshop Conveners at Pine Street. The Training covered such aspects as the Role of a Convener, Workshop Safety, the safe use of lathes and machinery and new member training. I was ably assisted by existing Conveners, Bob McGeechan, and Reg Webber, who shared their knowledge and experiences.

Having these additional Conveners, can only improve the ability of our Society in being more receptive to the needs of members and the Community at large.

The new WSQ Workshop Conveners are:

Alwyn Clark,  
John Donaldson,  
John Reed,  
John Carney,  
Guy Moschella,  
Mick Phythian,  
Barry Wilson, and

Wayne Molloy.

Their enthusiasm and commitment bodes well for our future.

They will work with our existing Workshop Conveners:

Rob McKee,  
John Sheppard,  
Lyndon Prescott,  
Alan Dixon,  
Bob McGeechan,  
Reg Webber,  
Brian Creese,  
Peter Churchwood,  
Mike Dodson and  
myself.

Congratulations to you all.

**Bob Kennedy**  
*Vice President*

## Jest Another Moment

An elderly, but hardy cattleman from North Queensland once told a young female neighbor that if she wanted to live a long life, the secret was to sprinkle a pinch of gunpowder on her oatmeal each morning.

She did this religiously and lived to the ripe old age of 103. She left behind 14 children, 30 grandchildren, 21 great-grandchildren, five great-great-grandchildren and a 40 foot HOLE where the crematorium used to be.



**Anonymous**  
*WSQ Member*

## Membership Matters!

### Birthdays:

The following members have fessed up to having birthdays in May:

- Loretta Scaini-Clarke
- Scotty Taylor
- Philip Oostenbroek
- Tai Nguyen
- John MaCrae

Hope you all have Happy Birthdays.

### New Members

No new members in April:

New members, when signing in please look on the small white board next to the cash tin for your name badges.

**Alwyn Clark**

*Membership Secretary*

## Council Library Displays

	Northside Team	Southside Team
May	Hamilton	Mt Ommaney Garden City
June	Nundah	Mt Ommaney

**John Byrne**  
*WSQ Member*

**Toni Dowd**  
*Assistant Librarian*

## Letters to the Editor

Hi Toni,

Hope the following lines can be included in your next Turning Talk.

*A heartfelt thank you to all at The Woodturners Society from Ann-Marie*

[thebeezneezcreativegardening.com.au](http://thebeezneezcreativegardening.com.au)

*Participants in Fairview Residential Care loved painting the donated wooden eggs.*

*Check out Marion's Easter egg chick and some of the Easter baskets!*



**Toni Dowd**  
*Assistant Librarian*

# Tree of the Month - Coolabah, Coolibah



**Botanical name:** *Eucalyptus microtheca*, *E. intertexta*.

**Other common names:** Flooded Box, Western Coolibah, Inland Red Box, Smooth-barked Coolibah, and Western Red Box. Famous as the tree in 'Waltzing Matilda'.

**Family name:** Myrtaceae.

**Distribution:** On favourable sites, a large hardwood distributed throughout the hotter parts of Northern, Western and Central Australia. Its range is restricted to rivers, pans and old watercourses.

**Colour:** The heartwood is a dark reddish brown, sepia or almost black in colour with a narrow, whitish sapwood.

**The timber:** Coarse texture with much interlocked grain. Gum pocket and veins are frequent. In common with many Eucalypts it produces attractive burls. Coolibah is one of the hardest members of the Eucalyptus family.

**Mechanical properties:** One of Australia's hardest and most durable timbers. Exceptionally strong, durable, hard and termite resistant.

**Working properties:** Very difficult to work, with considerable blunting of tools. Interlocked grain creates the potential for tearing of fibres. Can be glued, and pre-boring for fixings is mandatory.

**Uses:** Principally a construction timber - bridge work, wharves, sleepers, flooring.

Coolabah burls are widely used in turnery.

**Availability:** Limited.



Coolabah Bowl by Mick Phythian



Coolabah Bowl by Alwyn Clark



Coolabah Bowl by Charlie Edwards

**Geoff Holbeck**  
Editor – Turning Talk

The text is sourced from "Timber in Australia in Colour" by David C Clark. The tree image (taken by Ethel Aardvark) is sourced from Wikipedia. The turned images were provided by WSQ.



